

GET OVER 300,000
ARTIFACT-FREE IMAGES



True Flat Scan Path Enabled Products



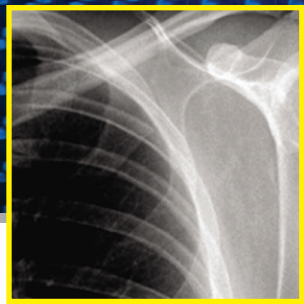
Reading from left to right

iCR3600 | Chrome | iDR-L | iDR | Fusion | VertX | 3600M | Chrome Duo

True Flat Scan Path technology is at the core of iCRco imaging devices. This technology has allowed iCRco to develop unique specialized imaging systems for the military, general medicine, veterinary, and non-destructive testing markets. The built in scan head is attached to a rigid mechanical drive system and protected by a rugged exoskeleton that makes iCRco digital readers extremely tough. Due to the success of **True Flat Scan Path**, iCRco has proudly introduced the most unique designs including ultra-compact, wall-mountable, multi-modality, and multi-bay cassette readers.

iCRco.com





Artifact-Free



IP Protected

IP Unprotected



Artifacts

True Flat Scan Path Advantages

- Prevents any stressing to the plates
- Allows us to use today's best phosphor technology
- Compatible with Crystal IP
- Dramatically increases plate life
- Significantly reduces total cost of ownership
- Increases Return On Investment (ROI)
- Simplifies mechanics to one moving part
- Reduces service and support
- Reduces risk of mechanical failure
- Increases cycle time
- Increases overall throughput

If your plate is being damaged every time you take an image between the first day and last day, you have a quality problem you can't track. Phosphor screens are not meant to bend, fold, or pass through rollers. This is a common problem across many computed radiography scanners, which in turn leads to image degradation, artifacts, and eventual replacement.

True Flat Scan Path (TFSP) is a technology that does not bend the plates and ensures the quality of the images do not degrade over time. It also ensures the phosphor screen never leaves its protective cassette, thus preserving image quality and preventing any damage during acquisition.

True Flat Scan Path is the solution to long-term excellence in image quality and promises over 300,000+ images per phosphor screen. iCRco imaging systems routinely process 300 patients a day, unlike other digital systems that simply cannot handle that workload without constant hardware support and replacement of phosphor plates.

With **True Flat Scan Path**, iCRco can achieve an amazing amount of cycles without image degradation. iCRco can guarantee consistent quality over a long time period, which is the most important factor in digital imaging.

